



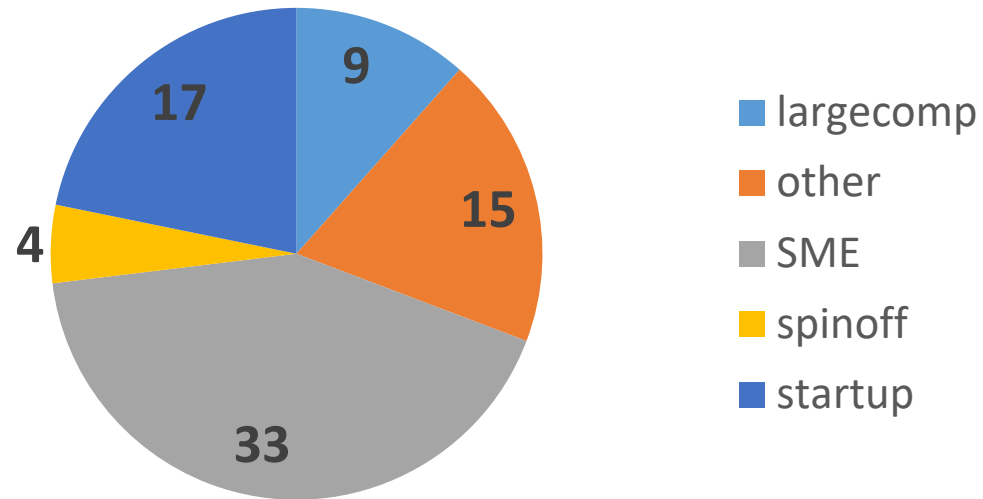
Nightingale

Smart monitoring, safer care

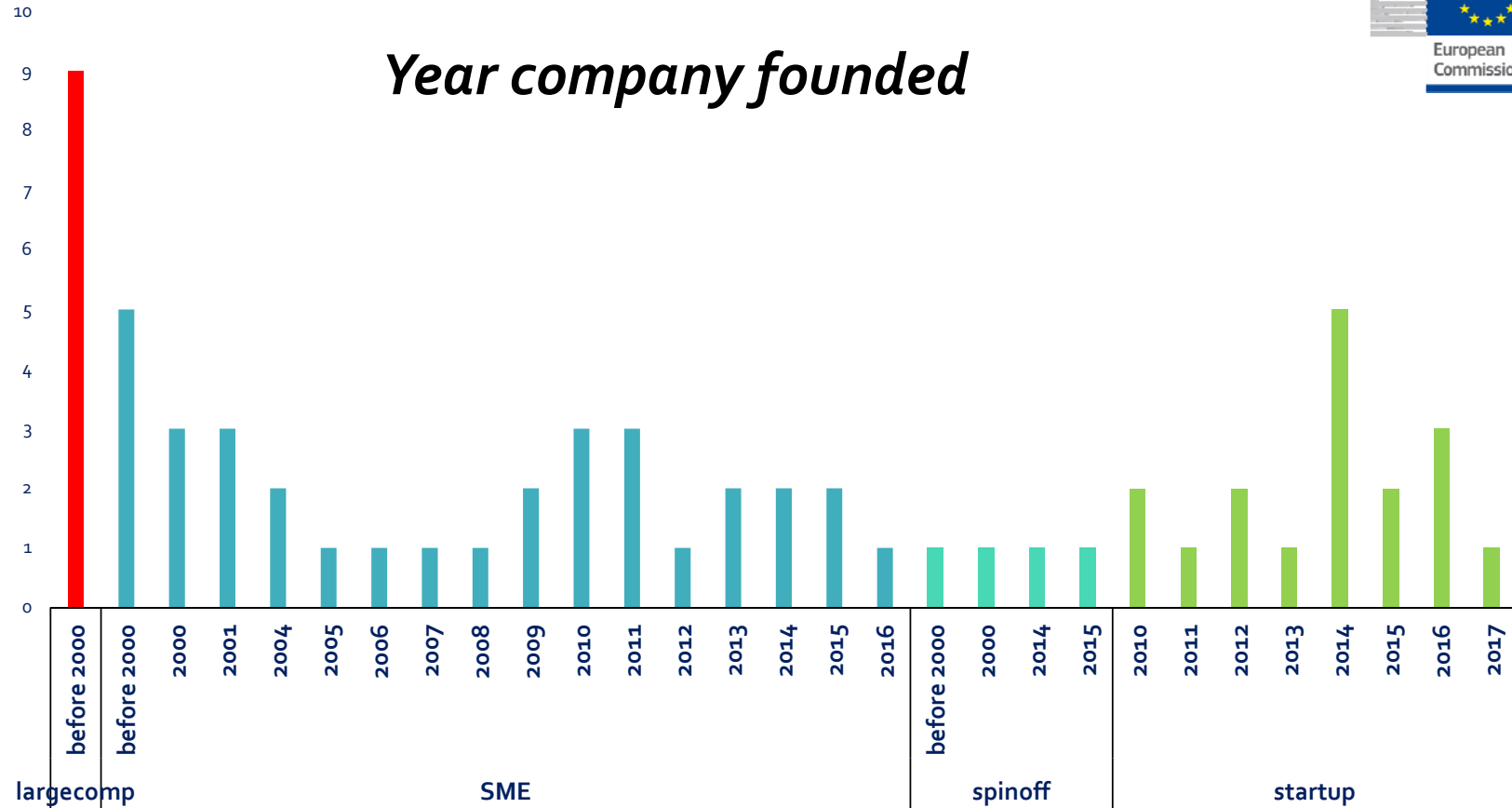
Presentation title: Questionnaire

Presenter: Jan Willems – Frank Rademakers

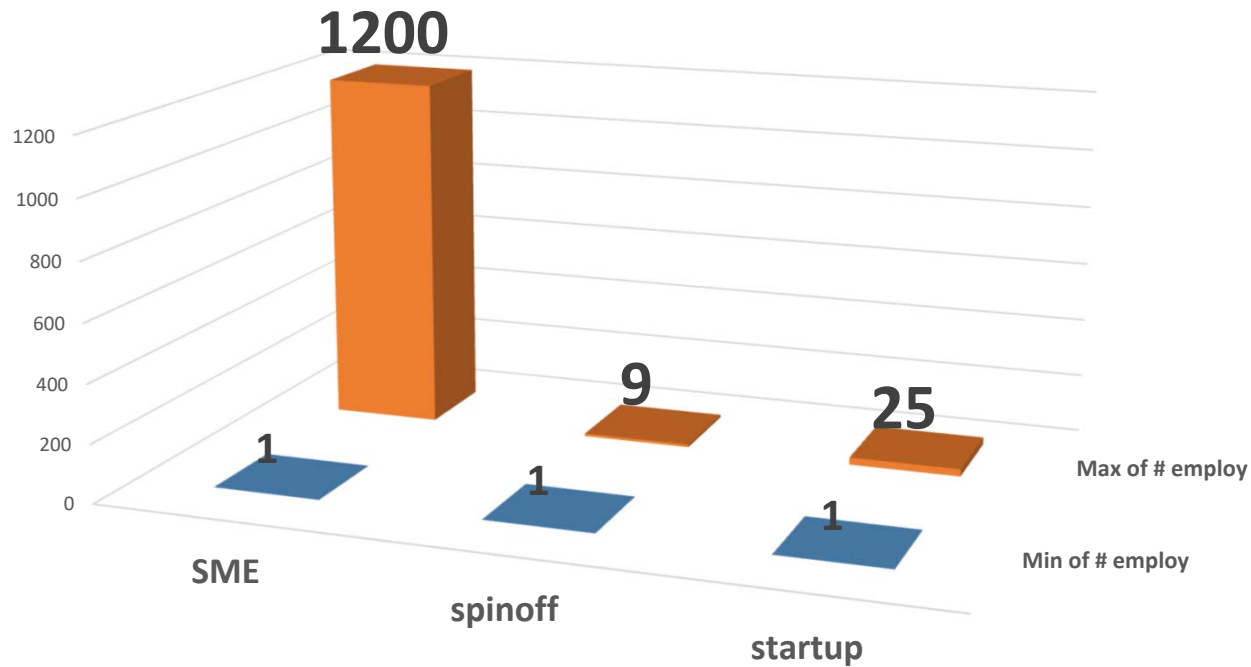
Type organisation



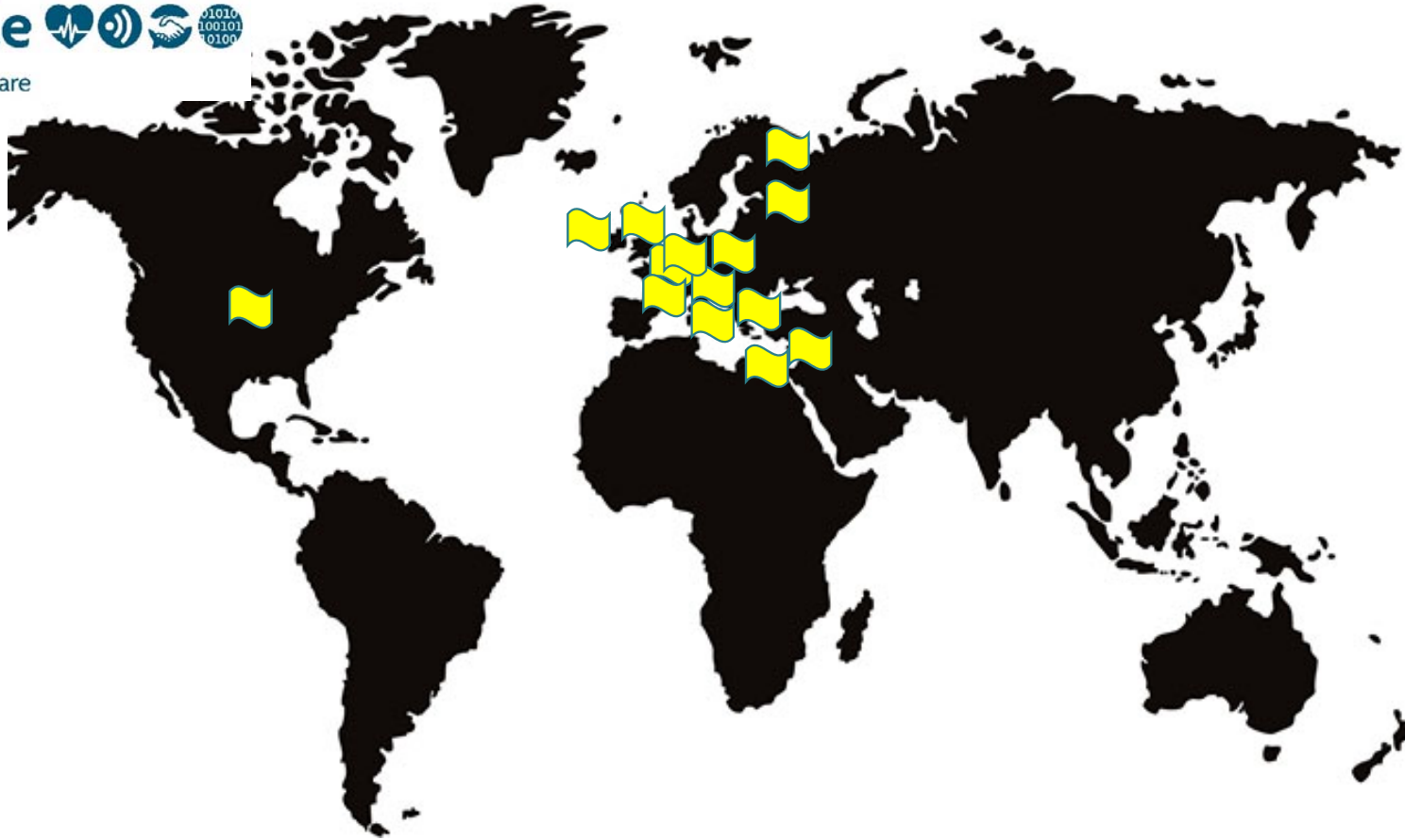
Year company founded



Number of employees



Nightingale 
Smart monitoring, safer care



Country	
AT	3
BE	12
CH	1
CY	1
DE	2
EST	2
FIN	3
FR	1
GE	3
IRL	2
ISR	3
IT	1
NL	25
PO	1
UK	11
USA	2



Is Nightingale in line with your business strategy?

Yes

No

Type organisation	In line?		
	N	NA	Y
largecomp			9
SME	1		32
spinoff			4
startup		1	16

Do you currently have technologies and/or software available to provide solutions to the functional requirements proposed in the Pre-Commercial Procurement (PCP) document?

Yes

No

Type organisation	Hard/Soft available?		
	N	NA	Y
largecomp			9
SME	4		29
spinoff	1		3
startup	2	1	14

Is your company familiar with data protection and privacy legislation?

Yes

No

Type organisation	Privacy	
	N	Y
largecomp		9
SME	2	31
spinoff		4
startup	1	16

Is the scope of the Nightingale challenge clear?

Yes

No

	Scope Clear?	
	N	Y
Type organisation		
largecomp	2	7
SME	2	31
spinoff		4
startup	2	15

Is the scope of the challenge feasible, given the time frame and budget (see Common Challenge document)?

Yes

No

Type organisation	Feasible?		
	N	NA	Y
largecomp	1	1	7
SME	4		29
spinoff	1		3
startup	3		14

Is your company able to carry out testing in four European countries in phase 3 of the project?

Yes

No

Type organisation	Testing		
	NA	Y	N
largecomp		9	
SME	1	31	1
spinoff		4	
startup		15	2

Do you have any legally binding agreements with any of the procurers of the consortium?

Yes

No

Type organisation	Agreements with procurers		
	N	NA	Y
largecomp	4	1	4
SME	29		4
spinoff	4		
startup	14		3

Are you interested in bidding to the Nightingale tender with other bidders and looking for partners to cooperate with?

Yes

No

	Combine		
	N	NA	Y
Type organisation			
largecomp	2	2	5
SME		2	31
spinoff			4
startup			17

Do you wish to publish your company name, contact details and the main focus of your company on the public Nightingale website with the objective to search for partners to collaborate with?

Yes

No

	Publish		
Type organisation	N	NA	Y
largecomp	2	1	6
SME	2	1	30
spinoff	1		3
startup			17

Are you interested in bidding to the Nightingale tender?

Yes

No

Type organisation	Bidding		
	N	NA	Y
largecomp			9
SME			33
spinoff			4
startup			17